

# Monobloc chemical seals D001-D040-D041

**D001 : from 0 + 2 to 0 + 100 bar**

**D040 : from 0 + 1 to 0 + 16 bar**

**D041 : from 0 + 16 to 0 + 250 bar**

**Low cost chemical seal**

**Should not be used in environments with strong vibrations or strong overpressures.**

One-piece D040 and D041 chemical seals are designed for the measurement of gauge pressure between 1 and 250 bar of corrosive fluids within the temperature range of -60° to +200°C. In the event of damage, sustained by the pressure indicator or transmitter, the diaphragm of the chemical seal ensures leak proof sealing of the system.

D001 is designed for water treatment and chlorinated products.



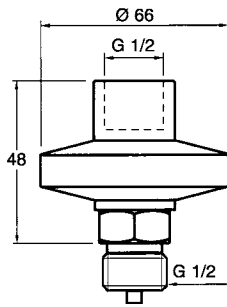
## Specifications

### Compatibility of D040/D041 with pressure gauges Ø 50-63-100-150-160

Pressure gauges	Ø 50-63			Ø 100-150-160		
	-20° ≤ T ≤ 100°	-40° ≤ T ≤ 150°	-60° ≤ T ≤ 200°	-20° ≤ T ≤ 100°	-40° ≤ T ≤ 150°	-60° ≤ T ≤ 200°
Fluid T° (°C)	-20° ≤ T ≤ 100°	-40° ≤ T ≤ 150°	-60° ≤ T ≤ 200°	-20° ≤ T ≤ 100°	-40° ≤ T ≤ 150°	-60° ≤ T ≤ 200°
Operating T° (°C)	-10° ≤ T ≤ 50°	-30° ≤ T ≤ 70°	-40° ≤ T ≤ 80°	-10° ≤ T ≤ 50°	-30° ≤ T ≤ 70°	-40° ≤ T ≤ 80°
D040	from	1 bar	1 bar	1 bar	1.6 bar	2.5 bar
	to	16 bar	16 bar	16 bar	16 bar	16 bar
D041	from	10 bar	16 bar	16 bar	25 bar	40 bar
	to	250 bar	250 bar	250 bar	250 bar	250 bar

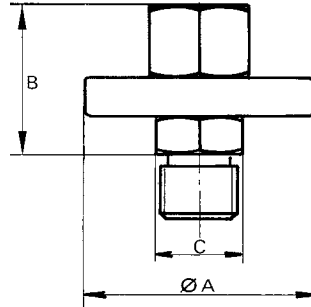
## Range of hygienic seals, dimensions

**D001**



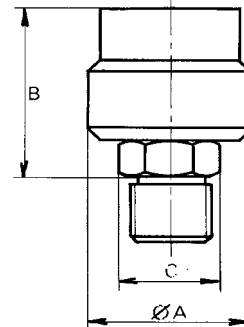
Top housing	Bottom housing	Diaphragm
Brass	Brass	Silver

**D040**



Thread	G 1/2	1/2 NPT	G 1/2	1/4 NPT
ØA	62	62	62	62
B	49,5	49,5	45,5	45,5
C	23	23	23	23
Weight	0.255 kg	0.285 kg	0.210 kg	0.255 kg

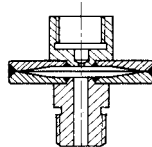
**D041**



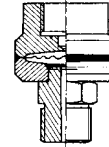
Thread	G 1/2	1/2 NPT	G 1/4 G 1/2	1/4 NPT
ØA	42	42	42	42
B	49	63	45	57
C	23	23	23	23
Weight	0.335 kg	0.478 kg	0.335 kg	0.430 kg

## Identification tables

**D040**



**D041**



Code	Top housing		Diaphragm	Bottom housing	
	Material	Female thread	Material	Material	Thread
<b>D04001</b>	Stainless steel	G 1/4	Stainless steel	Stainless steel	G 1/4
<b>D04002</b>	Stainless steel	G 1/4	Stainless steel	Stainless steel	G 1/2
<b>D04003</b>	Stainless steel	1/4 NPT	Stainless steel	Stainless steel	1/4 NPT
<b>D04004</b>	Stainless steel	1/4 NPT	Stainless steel	Stainless steel	1/2 NPT
<b>D04005</b>	Stainless steel	G 1/2	Stainless steel	Stainless steel	G 1/2
<b>D04006</b>	Stainless steel	G 1/2	Stainless steel	Stainless steel	G 1/4
<b>D04007</b>	Stainless steel	G 1/2	Stainless steel	Stainless steel	1/2 NPT
<b>D04008</b>	Stainless steel	G 1/2	Stainless steel	Stainless steel	3/8 BSP
<b>D04009</b>	Stainless steel	1/2 NPT	Stainless steel	Stainless steel	1/2 NPT
<b>D04010</b>	Stainless steel	1/2 NPT	Stainless steel	Stainless steel	1/4 NPT
<b>D04011</b>	Stainless steel	1/2 NPT	Stainless steel	Stainless steel	3/8 NPT
<b>D04013</b>	Stainless steel	1/2 NPT	Stainless steel	Stainless steel	1/2 BSP-Tr
<b>D04014</b>	Stainless steel	G 1/2	Stainless steel	Stainless steel	1/2 BSP-Tr
<b>D04015</b>	Stainless steel	G 1/4	Stainless steel	Stainless steel	3/8 BSP
<b>D04016</b>	Stainless steel	G 1/2	Stainless steel	Stainless steel	3/8 BSP-Tr
<b>D04017</b>	Stainless steel	G 1/4	Stainless steel	Stainless steel	1/4 BSP-Tr
<b>D04018</b>	Stainless steel	1/2 NPT	Stainless steel	Stainless steel	G 1/2
<b>D04019</b>	Stainless steel	G1/4	Stainless steel	Stainless steel	1/2 NPT
<b>D04020</b>	Stainless steel	G 1/2	Stainless steel	Stainless steel	1/4 BSP-Tr
<b>D04021</b>	Stainless steel	G 1/4	Stainless steel	Stainless steel	G 3/8
<b>D04022</b>	Stainless steel	1/2 NPT	Stainless steel	Stainless steel	3/4 NPT
<b>D04024</b>	Stainless steel	G 1/4	Stainless steel	Stainless steel	1/4 NPT

Code	Top housing		Diaphragm	Bottom housing	
	Material	Female thread	Material	Material	Thread
<b>D04101</b>	Stainless steel	G 1/4	Stainless steel	Stainless steel	G 1/4
<b>D04102</b>	Stainless steel	G 1/4	Stainless steel	Stainless steel	G 1/2
<b>D04103</b>	Stainless steel	1/4 NPT	Stainless steel	Stainless steel	1/4 NPT
<b>D04104</b>	Stainless steel	1/4 NPT	Stainless steel	Stainless steel	1/2 NPT
<b>D04105</b>	Stainless steel	G 1/2	Stainless steel	Stainless steel	G 1/2
<b>D04106</b>	Stainless steel	G 1/2	Stainless steel	Stainless steel	G 1/4
<b>D04107</b>	Stainless steel	G 1/2	Stainless steel	Stainless steel	1/2 NPT
<b>D04108</b>	Stainless steel	G 1/2	Stainless steel	Stainless steel	3/8 BSP
<b>D04109</b>	Stainless steel	1/2 NPT	Stainless steel	Stainless steel	1/2 NPT
<b>D04110</b>	Stainless steel	1/2 NPT	Stainless steel	Stainless steel	1/4 NPT
<b>D04111</b>	Stainless steel	1/2 NPT	Stainless steel	Stainless steel	3/8 NPT
<b>D04113</b>	Stainless steel	1/2 NPT	Stainless steel	Stainless steel	1/2 BSP-Tr
<b>D04114</b>	Stainless steel	G 1/2	Stainless steel	Stainless steel	1/2 BSP-Tr
<b>D04115</b>	Stainless steel	G 1/4	Stainless steel	Stainless steel	1/2 NPT
<b>D04116</b>	Stainless steel	G 1/4	Stainless steel	Stainless steel	3/8 BSP-Tr

## How to order a product

To order these devices, simply give the code corresponding to your choice(s) (see above table).